

**Growth
Leadership
Economic
Development
Revenue
Business
Culture**



2025

Note from the Deputy Director

“ —

Tempe Economic Development works to raise awareness of the city on a global scale while facilitating local business growth. We do that through partnerships and innovative initiatives that put Tempe on the map.

April Kroner, CEcD, AICP



- **The Economic Development team works as connectors, facilitators, initiative creators, and project managers.** Areas of expertise include: Business Retention and Expansion (BRE), Investment Attraction (Locates), Redevelopment & Real Estate, Small Business Support and Advocacy, Workforce Development, Policy, and overall relationship building.
- **Tempe ED connects with nearly all city departments.**

About Tempe Economic Development

Attractions | Locates

From Lego to Busch Vacuum to Cognite, Tempe's Economic Development team facilitates new investment and business locates. This equates to more revenue for the city, and more jobs to support the local economy.

*Did you know that for every 1 key sector job,
~4 spin-off jobs are created?*

Business Retention & Expansion (BRE)

Once a company has opened up for business in Tempe, the team continues to support them for ongoing growth and job creation. The **Tempe360** program is designed to provide the business community with direct access to the support they need to succeed. This area also works to **support start-ups** and collaborate on **workforce** initiatives.

Key Sectors

Downtown	Manufacturing
Semiconductor & Supply Chain	
Aerospace & Defense	Hospitality & Tourism
Finance, Insurance & Business Services	BioTech & BioScience

Property Development | Readiness

Various city-owned properties are currently undergoing redevelopment. From acquisition and site preparation to RFP and final development, these projects are facilitated by the team.

Dorsey Station, which was unanimously approved this year, will reimagine an underutilized, city-owned property as a mixed-use, mixed-income residential development. Construction is anticipated to begin in late 2026.



Dorsey Station

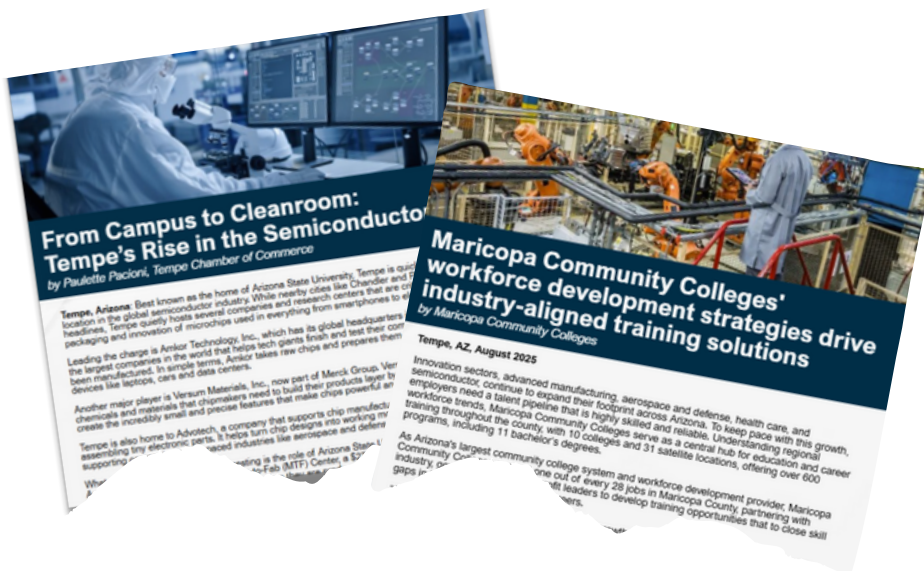
Marketing, Budgets, and Agreements

The team has skilled staff who manage the day-to-day marketing and financial priorities of economic development. From a new website to contract management, to policy updates, and everything in between, our rockstars keep the team on track and on budget.

Partnerships & Collaboration

Business Support | Workforce Support

From the Tempe Chamber, Downtown Tempe, and Tempe Tourism, to post-secondary to all levels of government, partnerships are critical to getting things done. And, let's not forget the internal teams that assist on a daily basis.



Delegations & Outreach



Delegations | Outreach

Sweden, Ireland, Canada, Germany, Texas, Illinois, California, and beyond. Tempe Economic Development hosted several delegations and participated in panels, discussions, career fairs, and conferences to support business investment and innovation.

Recent Wins



LEGO

Jobs: 256 | Avg. Wage: \$50K | 40,000 SF | The Beam on Farmer

Cognite Global HQ

Jobs: 250 | Avg. Wage: \$175K | CapEx: \$3.1M | 28,332 SF | Hayden Ferry

AIDC

Jobs: 158 | Avg. Wage: \$55K | CapEx: \$16.5M | 38,000 SF | Maker District

Goosehead Insurance Regional HQ

Jobs: 300 | Avg. Wage: \$80K | CapEx: \$1.2M | 10,112 SF | Hayden Ferry

Branded Bills HQ

Jobs: 140 | 96,407 SF | 360 S. Smith Road

Kestra Holdings Secondary HQ

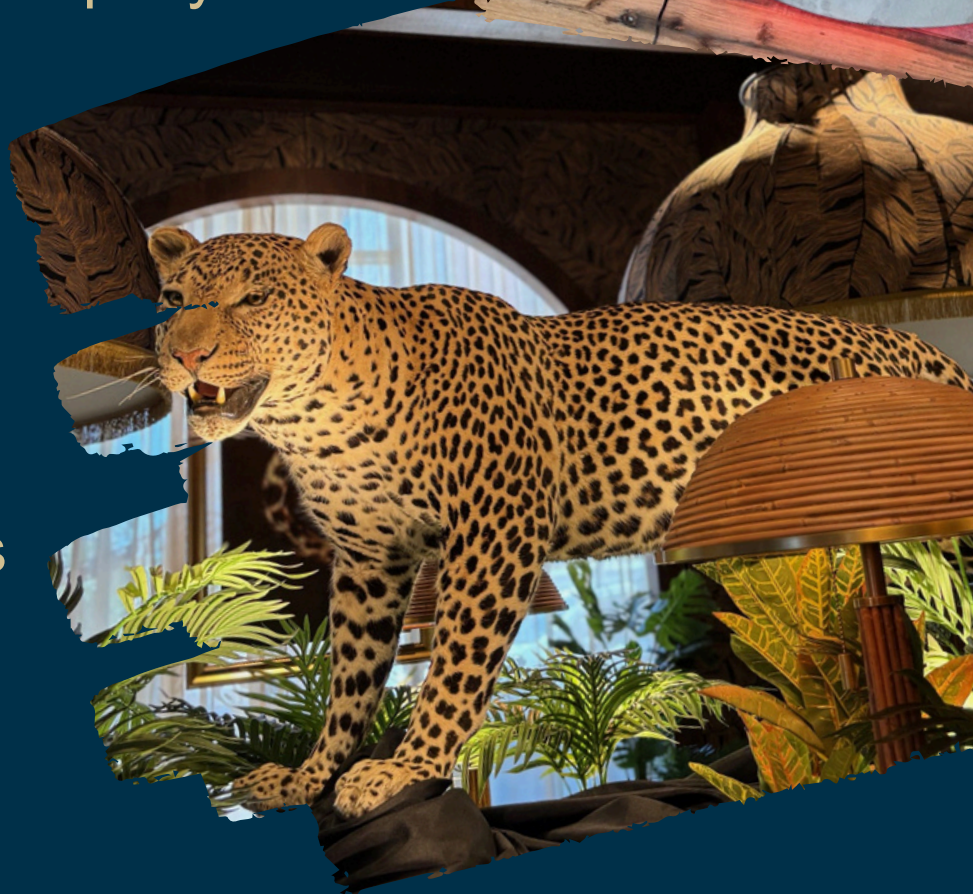
Jobs: 350 | Avg. Wage: \$69K | 69,000 SF | 2100 Rio

Setna iO

Jobs: 142 | Avg. Wage: \$72K | CapEx: \$40.5M | 112,300 SF | Liberty West

Restaurant & Retail

Sam's Club
Better Buzz Coffee
Prince Street Pizza
Outlaw Distillery
Glai Baan
Three Thirty Three
Devil's Hideaway & Idle Hands
Electric Pickle
Phantom Fox Beer Company
Goat & Ram Pizza
Novel Ice Cream
Blue Sushi Sake Grill
Pepper Lunch
Night Owl
Filthy Animal
Roman God of Fire
Drop Dead Gorgeous
Salt & Straw
Wild Barbeque
Bad Jimmy's
Proof Bread



Highlights & Hot Topics



194,000
EST. POPULATION

29.5
MED. AGE



\$76K
MEDIAN HH INCOME



WORKFORCE OF
210,000

50% BACHELOR'S
DEGREE OR
HIGHER



STUDENTS AT
ASU TEMPE
CAMPUS

94% HIGH
SCHOOL
GRADS

21
MIN AVE.
COMMUTE

#1 NET IMPORTER OF JOBS
OF ANY MAJOR CITY IN THE PHOENIX MSA



85,935
HOUSING UNITS



13K
BUSINESSES

4% 
UNEMPLOYMENT

Tempe, AZ

Highlights & Hot Topics



16

NEW NATIONAL & INTERNATIONAL LOCATES

2500



DIRECT JOBS

\$70.5M

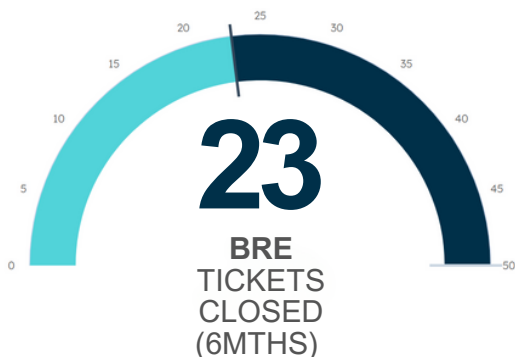


COMBINED CAPEX



65

GRAND OPENING, RIBBON-CUTTING, AND GROUND-BREAKING CELEBRATIONS



41



BUSINESS SUPPORT
TICKETS CLOSED

Data: July 1, 2024–Dec. 2025

Economic Development



2025